



MONTHLY MEMBERSHIP PROGRESS REPORT

District 2 T1

Results as of: 5/31/2014

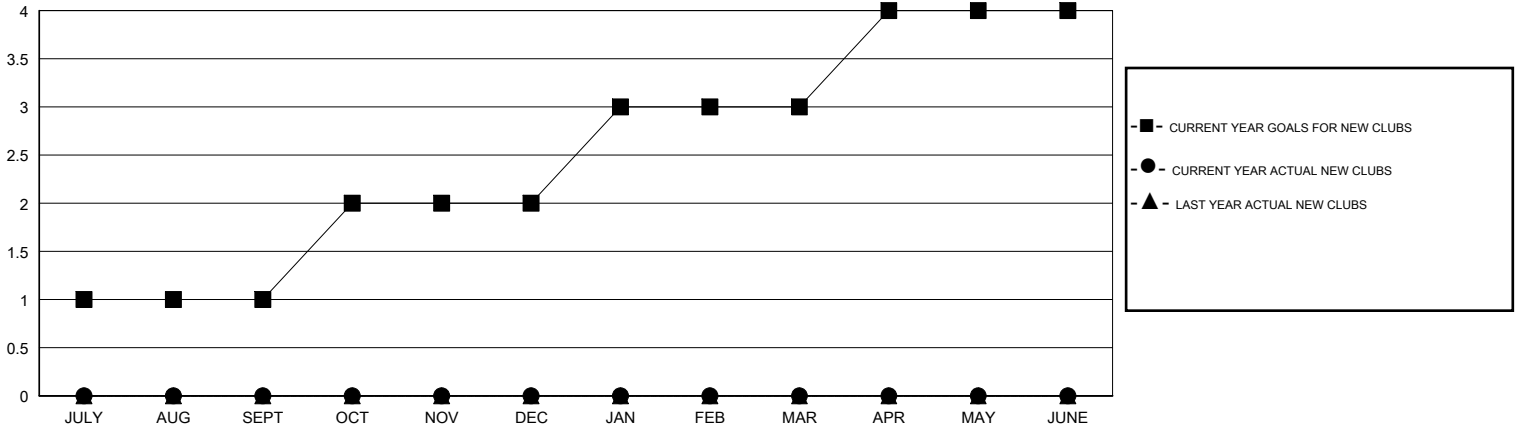
GMT: HAL GRIFFIN

LOCATION TEXAS

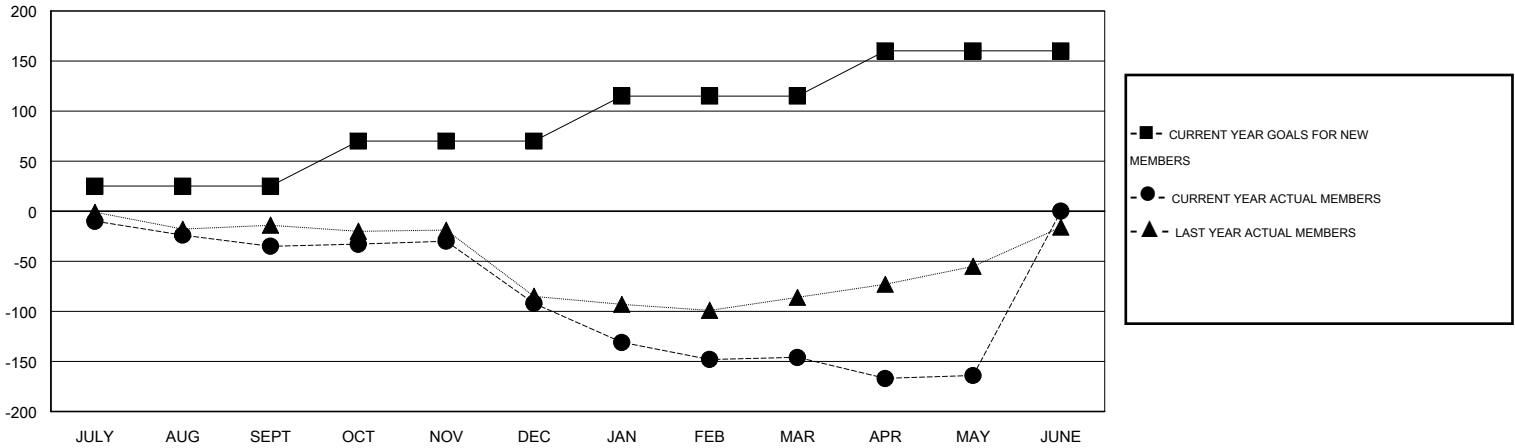
GMT CA 1

Clubs					Members				
RESULTS FOR 2013-2014					RESULTS FOR 2013-2014				
QUARTER	NEW CLUB GOAL	ACTUAL NEW CLUBS	ACTUAL DROPPED CLUBS	ACTUAL NET GAIN/LOSS	QUARTER	NEW MEMBER GOAL	ACTUAL TOTAL MEMBERS ADDED	ACTUAL DROPPED MEMBERS	ACTUAL NET GAIN/LOSS
JULY/AUG/SEPT	1	0	0	0	JULY/AUG/SEPT	25	44	79	-35
OCT/NOV/DEC	1	0	4	-4	OCT/NOV/DEC	45	46	103	-57
JAN/FEB/MAR	1	0	0	0	JAN/FEB/MAR	45	47	101	-54
APR/MAY/JUNE	1	0	1	-1	APR/MAY/JUNE	45	22	40	-18

GOALS AND ACTUAL NEW CLUBS CUMULATIVE



GOALS AND ACTUAL MEMBERS CUMULATIVE



DROPPED CLUBS: 5	32 CLUBS OF 49 ADDED 1 OR MORE NEW MEMBERS	<u>GENDER DISTRIBUTION</u>	
<u>DROPPED MEMBERS</u>		MALE	1,034 (73.91%)
DECEASED	20	FEMALE	365 (26.09%)
CLUB CANCELLED	75	FAMILY UNIT MEMBERS 174 HEAD OF HOUSEHOLD 87 NON-HEAD OF HOUSEHOLD 87	
OTHER	228		
TOTAL	323		

[CLICK HERE FOR HEALTH ASSESSMENT DATA](#)